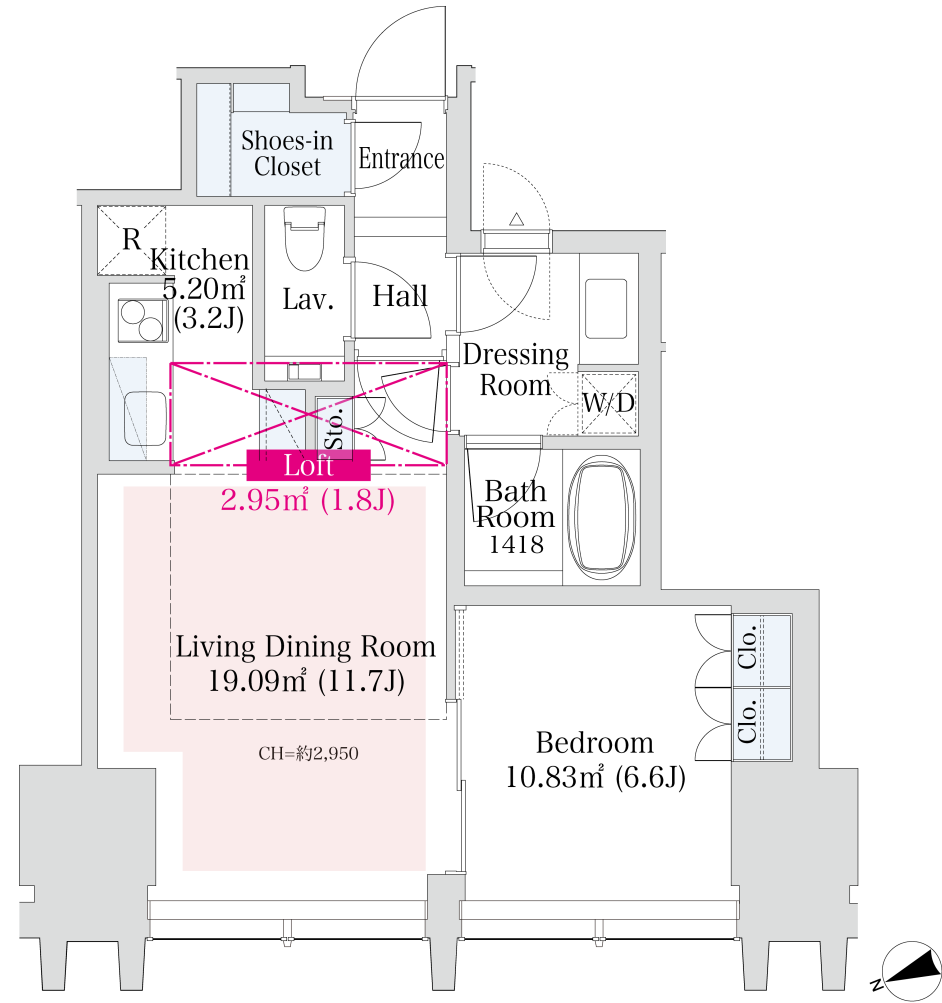
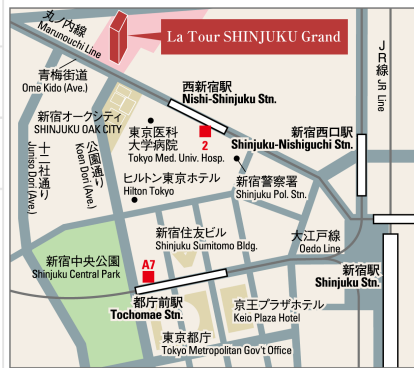


La Tour Shinjuku Grand Apartment No. 503 (5F)

Update Date : 2024/10/9 Next scheduled update date: Anytime

Layout(Type)	1LDK(50G-L)	Area	51.56㎡ (554.7856 sq. ft.)
Rent	¥ 359,000	Public maintenance fee Administration cost	included in rent
Deposit Key money	2 Months · None	Renewal fee	None
Transaction type (Year)	Periodic Tenancy Contract (3 Years)	Status	Move-in date negotiable (Being restored)
Note	24-hour bilingual concierge; hotel-like amenities 1 month rent will be deducted at the time of move-out. •This property is only for residential purposes, except the SOHO		
Equipments	Please contact us if there is any question.		
Completed	September, 2011		
Constructing	· RC, SRC, Steel-Frame · Anti-sway structure · 40 Stories		
Location	8-17-2 Nishi-shinjuku, Shinjuku-ku, Tokyo		
Trains	Nishi-Shinjuku Stn., Marunouchi Line (6-min. walk) Tochomae Stn., Oedo Line (10-min. walk) Shinjuku Stn., JR Line (15-min. walk)		



- Lease guarantee agreement: required (by a guarantee company designated by us)
 Guarantee fee: 30% of lease for the first year, 8,000 yen/year for the second and subsequent years
 Fees may vary depending on the guarantee company - contact us for more details.
- All rentals are on a first-come-first-served basis.
- Multi-risk home insurance is mandatory.
- Deposits equivalent to one month of rent are non-refundable at the end of the contract.
- If the contract is terminated in less than one year, a penalty equivalent to one-month rent will be applied.
- When disparities arise between the drawing and the actual construction, the actual construction takes precedence.

Sumitomo Realty & Development Co., Ltd.

Shinjuku NS Building, 2-4-1, Nishi-Shinjuku Shinjuku-ku, Tokyo 163-0820 Japan

Phone: +81-3-3346-9510

Phone: 0120-770-507

for Real estate company: +81-3-3346-9510

Please contact us if there is any question.