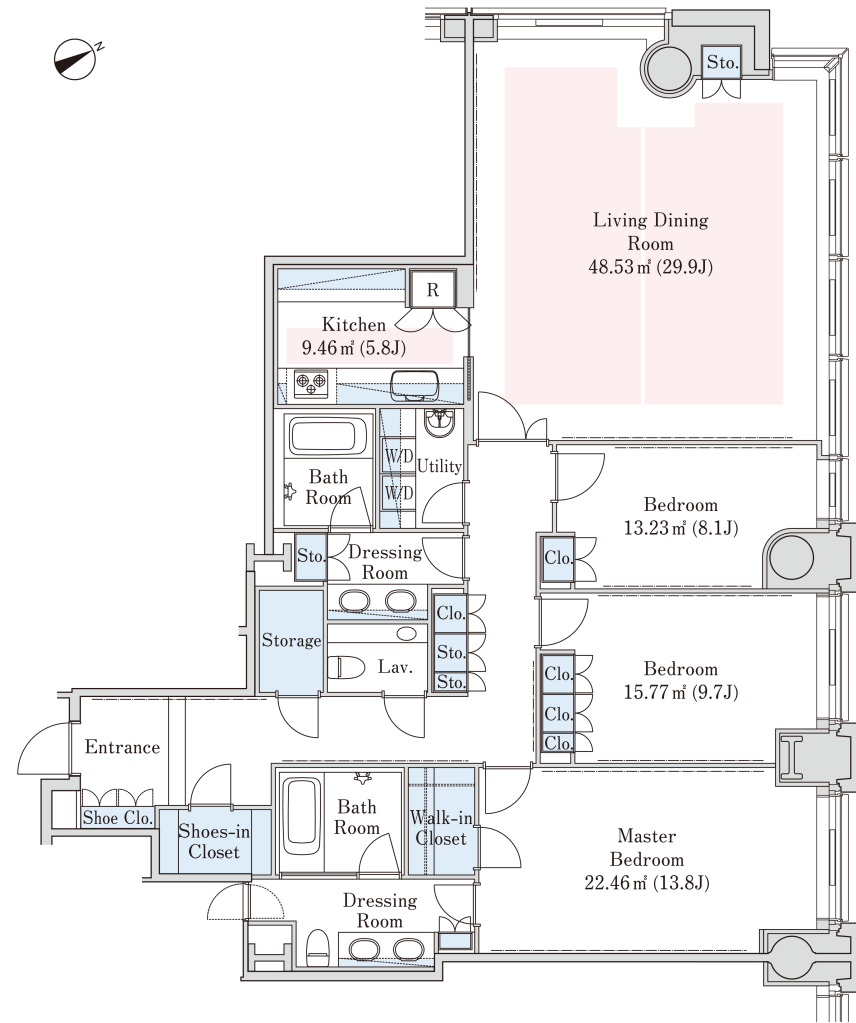


La Tour Mita Apartment No. 3408 (34F)

Update Date : 2025/4/1 Next scheduled update date: Anytime

Layout(Type)	3LDK(H)	Area	170.32m ² (1832.6432 sq. ft.)
Rent	¥ 1,288,000	Public maintenance fee Administration cost	included in rent
Deposit Key money	2 Months · None	Renewal fee	None
Transaction type (Year)	Periodic Tenancy Contract (3 Years)	Status	Vacancy soon (Moving out: 05/2025)
Note	<p>Advanced security system 1 month rent will be deducted at the time of move-out.</p> <p>•This property is only for residential purposes, except the SOHO</p>		
Equipments	Please contact us if there is any question.		
Completed	September, 2006		
Constructing	<p>· Steel-frame, partially reinforced concrete · Vibrati on-control construction · 43 stories</p>		
Location	3-5-27 Mita, Minato-ku, Tokyo		
Trains	<p>Mita Stn., Asakusa/Mita Lines (8-min. walk) Sengakuji Stn., Asakusa Line (6-min. walk) Tamachi Stn., JR Line (9-min. walk)</p>		



- Lease guarantee agreement: required (by a guarantee company designated by us)
Guarantee fee: 30% of lease for the first year, 8,000 yen/year for the second and subsequent years
Fees may vary depending on the guarantee company - contact us for more details.
- All rentals are on a first-come-first-served basis.
- Multi-risk home insurance is mandatory.
- Deposits equivalent to one month of rent are non-refundable at the end of the contract.
- If the contract is terminated in less than one year, a penalty equivalent to one-month rent will be applied.
- When disparities arise between the drawing and the actual construction, the actual construction takes precedence.

Sumitomo Realty & Development Co., Ltd.

Shinjuku NS Building, 2-4-1, Nishi-Shinjuku Shinjuku-ku, Tokyo 163-0820 Japan

Phone: +81-3-3346-9510

Phone: 0120-770-507

for Real estate company: +81-3-3346-9510

Please contact us if there is any question.