
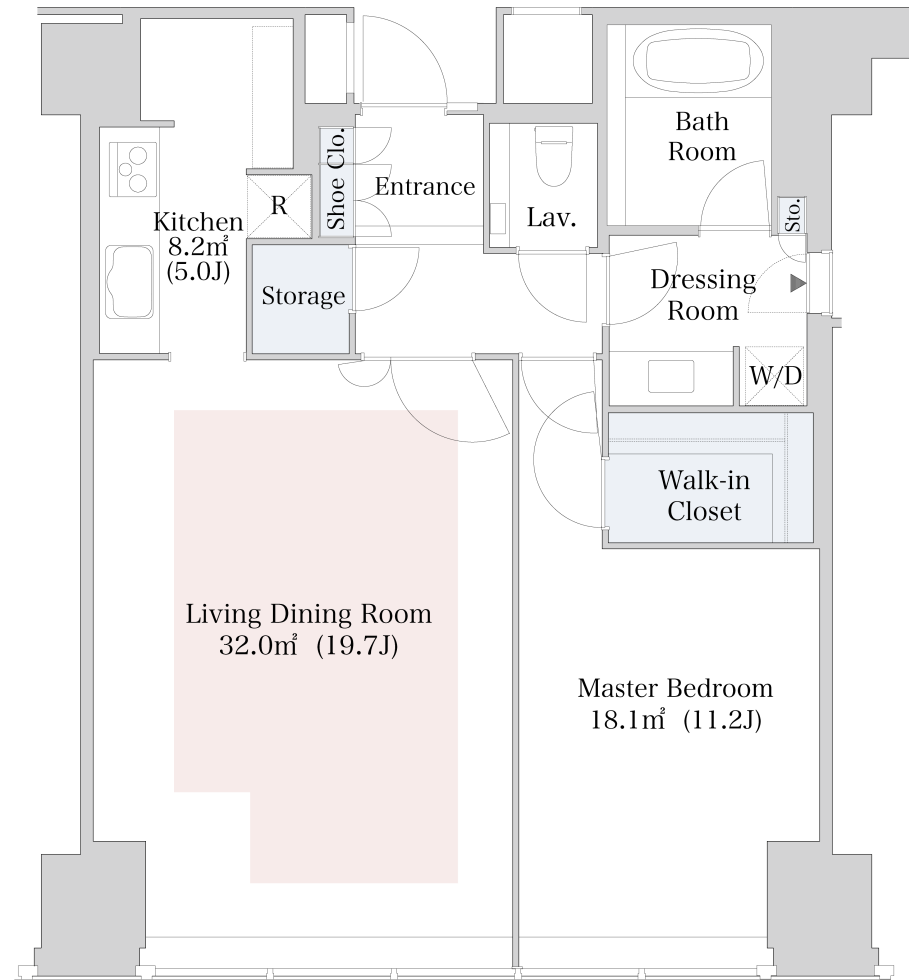


# CENTRAL PARK TOWER La Tour Shinjuku Apartment No. 3207 (32F)

Update Date : 2025/3/14 Next scheduled update date: Anytime

Layout(Type)	1LDK(L2-80W)	Area	82.14㎡ (883.8264 sq. ft.)
Rent	¥ 550,000	Public maintenance fee Administration cost	included in rent
Deposit Key money	2 Months ・ None	Renewal fee	None
Transaction type (Year)	Periodic Tenancy Contract (3 Years)	Status	Vacancy soon (Moving out: 04/2025)
Note	•This property is only for residential purposes, except the SOHO		
Equipments	Please contact us if there is any question.		
Completed	January,2010		
Constructing	・ Steel construction, steel framed reinforced concrete structure, reinforced concrete construction ・ 44 stories		
Location	6-15-1 Nishi-Shinjuku, Shinjuku-ku, Tokyo		
Trains	Nishi-Shinjuku Stn., Marunouchi Line (7-min. walk) Tochomae Stn., Oedo Line (5-min. walk) Shinjuku Stn., JR Line (13-min. walk)		
			



- 1 Lease guarantee agreement: required (by a guarantee company designated by us)  
Guarantee fee: 30% of lease for the first year, 8,000 yen/year for the second and subsequent years  
Fees may vary depending on the guarantee company - contact us for more details.
- 2 All rentals are on a first-come-first-served basis.
- 3 Multi-risk home insurance is mandatory.
- 4 Deposits equivalent to one month of rent are non-refundable at the end of the contract.
- 5 If the contract is terminated in less than one year, a penalty equivalent to one-month rent will be applied.
- 6 When disparities arise between the drawing and the actual construction, the actual construction takes precedence.

Sumitomo Realty & Development Co., Ltd.

Shinjuku NS Building, 2-4-1, Nishi-Shinjuku Shinjuku-ku, Tokyo 163-0820 Japan

Phone: +81-3-3346-9510

Phone: 0120-770-507

for Real estate company: +81-3-3346-9510

Please contact us if there is any question.