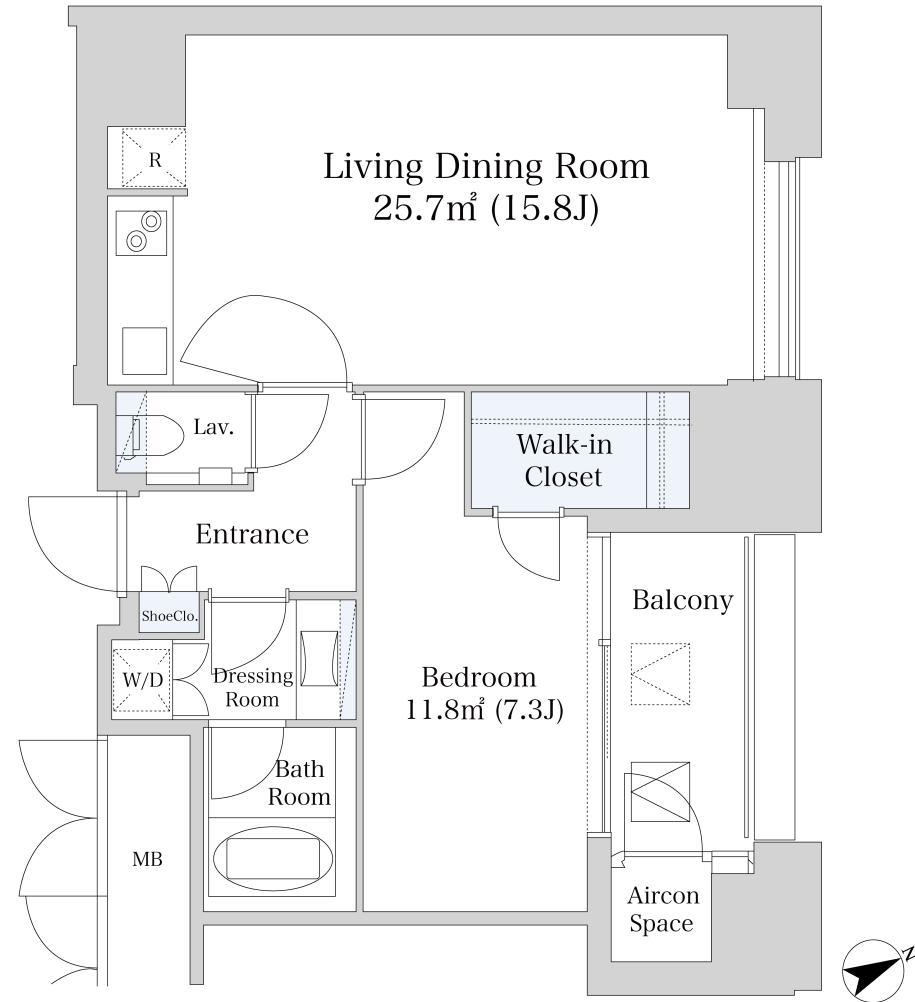


Platine Nishi-Shinjuku Apartment No. 305 (3F)

Update Date : 2025/2/23 Next scheduled update date: Anytime

Layout(Type)	1LDK(R)	Area	55.15㎡ (593.414 sq. ft.)
Rent	¥ 298,000	Public maintenance fee Administration cost	¥ 15,000
Deposit Key money	2 Months · None	Renewal fee	None
Transaction type (Year)	Periodic Tenancy Contract (3 Years)	Status	Vacancy soon (Moving out: 03/2025)
Note	Auto-lock A/C installed Floor heating (Living/Dining) Fitness room is available *This property is only for residential purposes, except the SOHO		
Equipments	Please contact us if there is any question.		
Completed	January, 2009		
Constructing	· Steel-frame, reinforced concrete · 33 stories		
Location	7-20-1 Nishi-Shinjuku, Shinjuku-ku, Tokyo		
Trains	Nishi-Shinjuku Stn., Marunouchi Line (4-min. walk) Tochomae Stn., Oedo Line (7-min. walk) Shinjuku Stn., Keio/Odakyu/JR Lines (8-min. walk) Shinjuku-Nishiguchi Stn., Oedo Line (6-min. walk)		



- Lease guarantee agreement: required (by a guarantee company designated by us)
 Guarantee fee: 30% of lease for the first year, 8,000 yen/year for the second and subsequent years
 Fees may vary depending on the guarantee company - contact us for more details.
- All rentals are on a first-come-first-served basis.
- Multi-risk home insurance is mandatory.
- Deposits equivalent to one month of rent are non-refundable at the end of the contract.
- If the contract is terminated in less than one year, a penalty equivalent to one-month rent will be applied.
- When disparities arise between the drawing and the actual construction, the actual construction takes precedence.

Sumitomo Realty & Development Co., Ltd.

Shinjuku NS Building, 2-4-1, Nishi-Shinjuku Shinjuku-ku, Tokyo 163-0820 Japan

Phone: +81-3-3346-9510

Phone: 0120-770-507

for Real estate company: +81-3-3346-9510

Please contact us if there is any question.