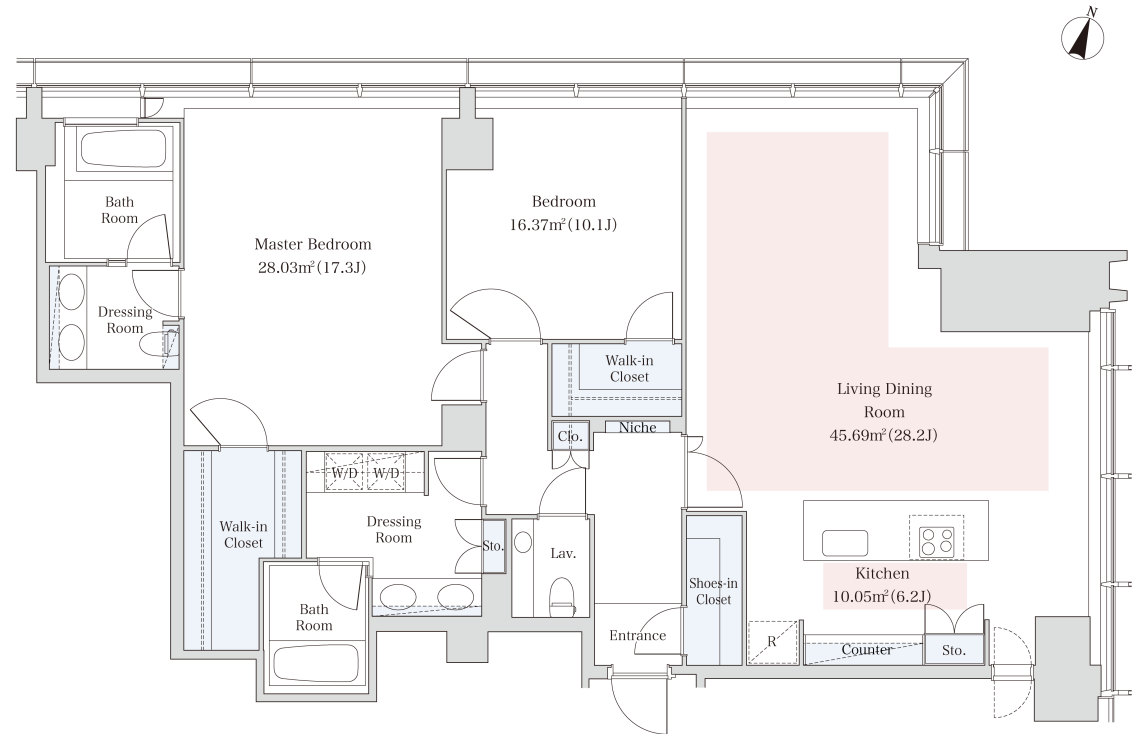


La Tour Aobadai Apartment No. 2706 (27F)

Update Date : 2025/1/22 Next scheduled update date: Anytime

Layout(Type)	2LDK(M)	Area	151.63m ² (1631.5388 sq. ft.)
Rent	¥ 1,520,000	Public maintenance fee Administration cost	included in rent
Deposit Key money	2 Months · None	Renewal fee	None
Transaction type (Year)	Periodic Tenancy Contract (3 Years)	Status	Move-in date negotiable (Being restored)
Note	Fitness lounge on 21nd floor Color Variation(White Chic/Stylish Brown) 1 month rent will be deducted at the time of move-out. •This property is only for residential purposes, except the SOHO		
Equipments	Please contact us if there is any question.		
Completed	August,2009		
Constructing	· Steel-frame, reinforced concrete · Anti-seismic res ponce control · 33 stories		
Location	3-6-28 Aobadai, Meguro-ku, Tokyo		
Trains	Ikejiri-Ohasi Stn., Denentoshi Line (7- min. walk) Shinsen Stn., Inokashira Line (9-min. w alk) Shibuya Stn., JR Line (16-min. walk)		



- 1 Lease guarantee agreement: required (by a guarantee company designated by us)
 Guarantee fee: 30% of lease for the first year, 8,000 yen/year for the second and subsequent years
 Fees may vary depending on the guarantee company - contact us for more details.
- 2 All rentals are on a first-come-first-served basis.
- 3 Multi-risk home insurance is mandatory.
- 4 Deposits equivalent to one month of rent are non-refundable at the end of the contract.
- 5 If the contract is terminated in less than one year, a penalty equivalent to one-month rent will be applied.
- 6 When disparities arise between the drawing and the actual construction, the actual construction takes precedence.

Sumitomo Realty & Development Co., Ltd.

Shinjuku NS Building, 2-4-1, Nishi-Shinjuku Shinjuku-ku, Tokyo 163-0820 Japan

Phone: +81-3-3346-9510

Phone: 0120-770-507

for Real estate company: +81-3-3346-9510

Please contact us if there is any question.