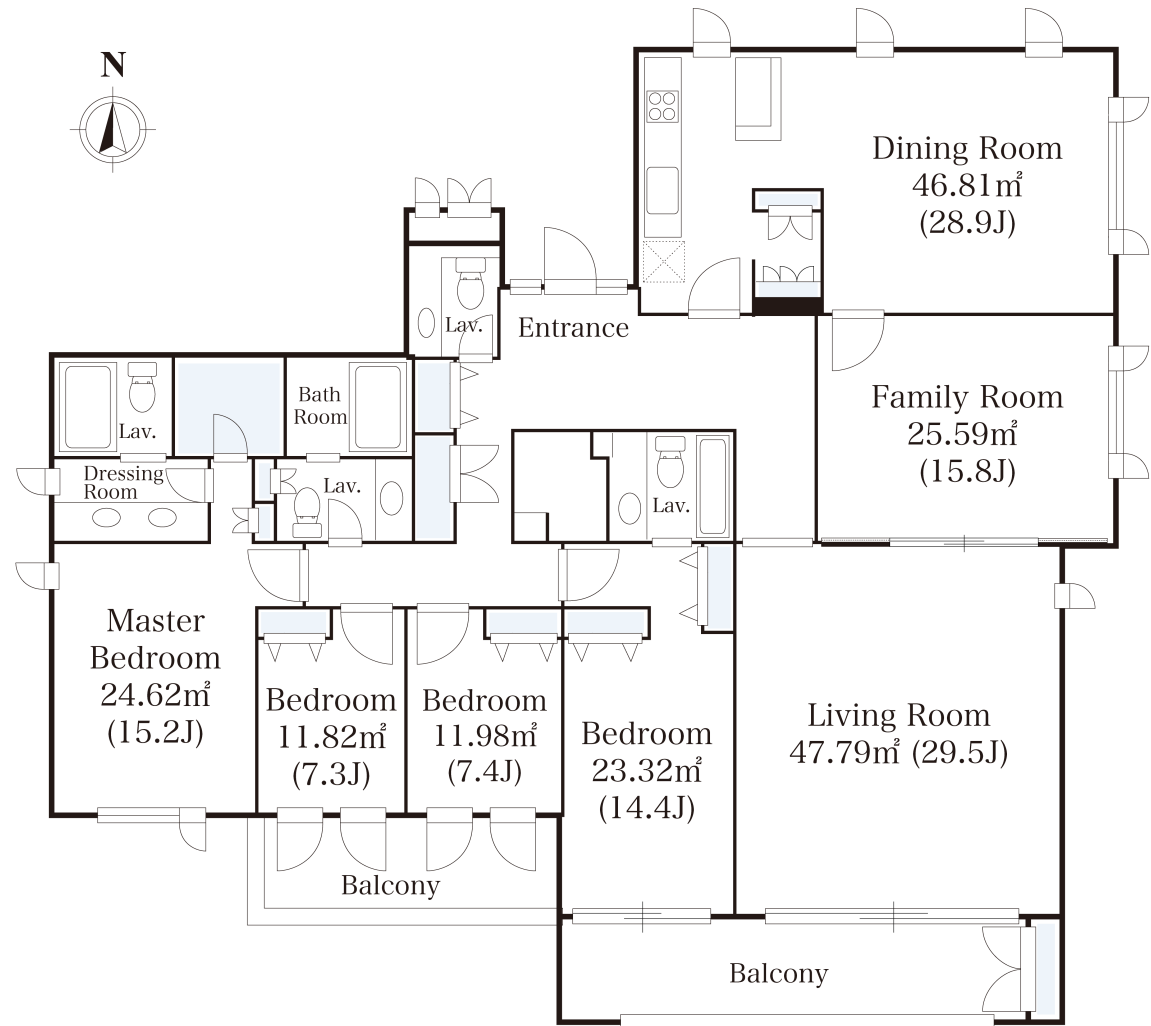


Cortile Komaba Apartment No. 2301 (2F)

Update Date : 2025/2/23 Next scheduled update date: Anytime

Layout(Type)	4LDK(2301)	Area	230.63m ² (2481.5788 sq. ft.)
Rent	¥ 1,950,000	Public maintenance fee Administration cost	included in rent
Deposit Key money	2 Months · None	Renewal fee	None
Transaction type (Year)	Periodic Tenancy Contract (3 Years)	Status	Move-in date negotiable (Being restored)
Note	<p>•This property is only for residential purposes, except the SOHO</p>		
Equipments	Please contact us if there is any question.		
Completed	February,2001		
Constructing	· Steel-frame, reinforced concrete · 3 stories		
Location	4-4-13 Komaba, Meguro-ku, Tokyo		
Trains	Komaba-todaimae Stn., Inokashira Line (4-min. walk) Ikenoue Stn., Inokashira Line (14-min. walk) Yoyogiuehara Stn., Chiyoda Line (16-min. walk)		



- 1 Lease guarantee agreement: required (by a guarantee company designated by us)
 Guarantee fee: 30% of lease for the first year, 8,000 yen/year for the second and subsequent years
 Fees may vary depending on the guarantee company - contact us for more details.
- 2 All rentals are on a first-come-first-served basis.
- 3 Multi-risk home insurance is mandatory.
- 4 Deposits equivalent to one month of rent are non-refundable at the end of the contract.
- 5 If the contract is terminated in less than one year, a penalty equivalent to one-month rent will be applied.
- 6 When disparities arise between the drawing and the actual construction, the actual construction takes precedence.

Sumitomo Realty & Development Co., Ltd.

Shinjuku NS Building, 2-4-1, Nishi-Shinjuku Shinjuku-ku, Tokyo 163-0820 Japan

Phone: +81-3-3346-9510

Phone: 0120-770-507

for Real estate company: +81-3-3346-9510

Please contact us if there is any question.