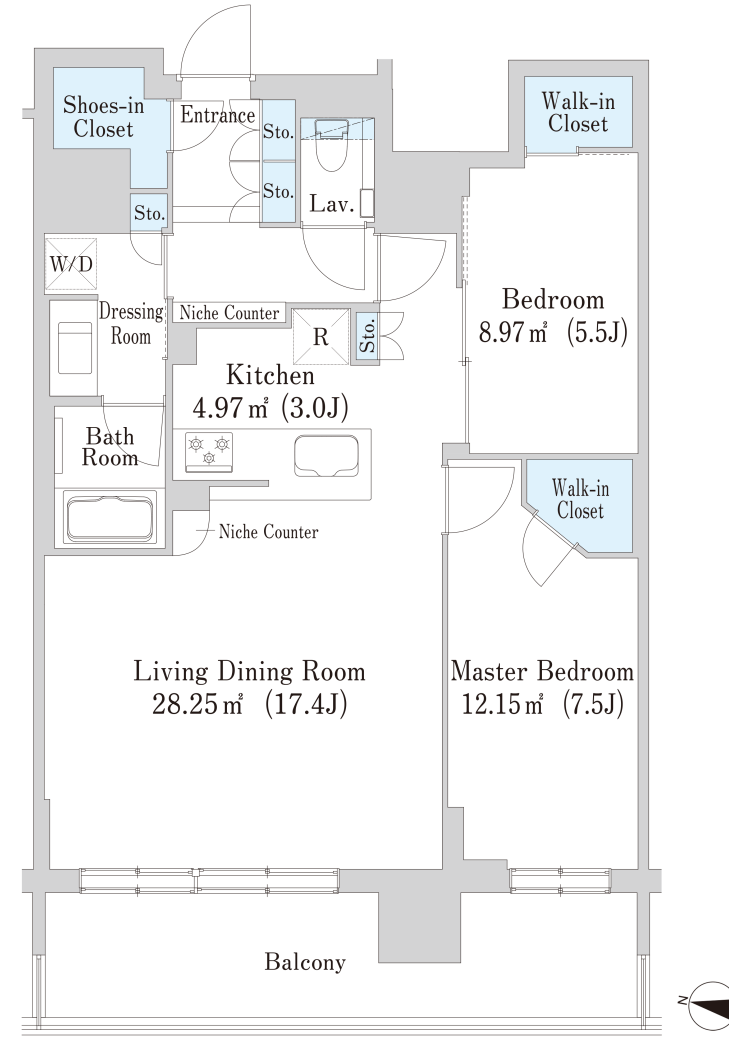
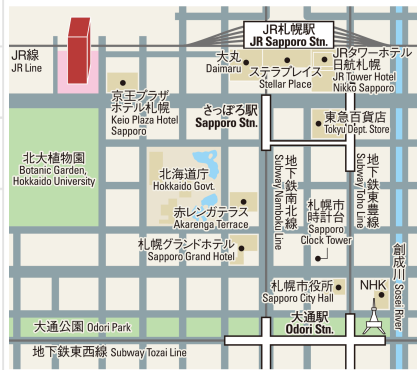


La Tour SAPPORO ITO GARDEN Apartment No. 1204 (12F)

Update Date : 2024/10/9 Next scheduled update date: Anytime

Layout(Type)	2LDK(D2)	Area	77.55㎡ (834.438 sq. ft.)
Rent	¥ 268,000	Public maintenance fee Administration cost	included in rent
Deposit Key money	2 Months · None	Renewal fee	None
Transaction type (Year)	Periodic Tenancy Contract (3 Years)	Status	Move in possible now (After paperwork)
Note	24-hour concierge service with a hotel quality Easy access from only 8-minute walk from JR " Sapporo " station Environment which enables to enjoy nature of Hokkaido University Botanic Garden *This property is only for residential purposes, except the SOHO		
Equipments	Please contact us if there is any question.		
Completed	February,2019		
Constructing	*Concrete-steel, 30 stories above ground and 1 basement level, 2 stories penthouse		
Location	8-1-1, Kita 5 Jo Nishi, Chuo-ku, Sapporo-shi, Hokkaido (Parcel number)		
Trains	8 minute-walk from Sapporo Station (JR) 8 minute-walk from Sapporo Station (Nanboku Line · Toho Line, Sapporo Municipal Subway)		



- Lease guarantee agreement: required (by a guarantee company designated by us)
Guarantee fee: 30% of lease for the first year, 8,000 yen/year for the second and subsequent years
Fees may vary depending on the guarantee company - contact us for more details.
- All rentals are on a first-come-first-served basis.
- Multi-risk home insurance is mandatory.
- Deposits equivalent to one month of rent are non-refundable at the end of the contract.
- If the contract is terminated in less than one year, a penalty equivalent to one-month rent will be applied.
- When disparities arise between the drawing and the actual construction, the actual construction takes precedence.

Sumitomo Realty & Development Co., Ltd.

Shinjuku NS Building, 2-4-1, Nishi-Shinjuku Shinjuku-ku, Tokyo 163-0820 Japan

Phone: +81-3-3346-9510

Phone: 0120-770-507

for Real estate company: +81-3-3346-9510

Please contact us if there is any question.